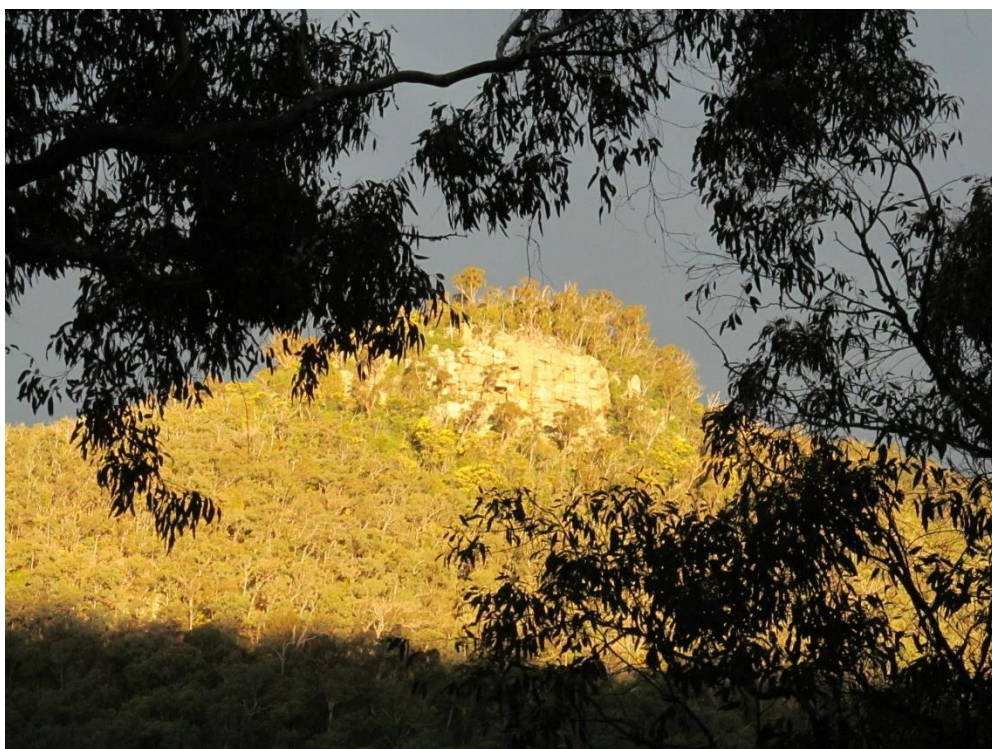
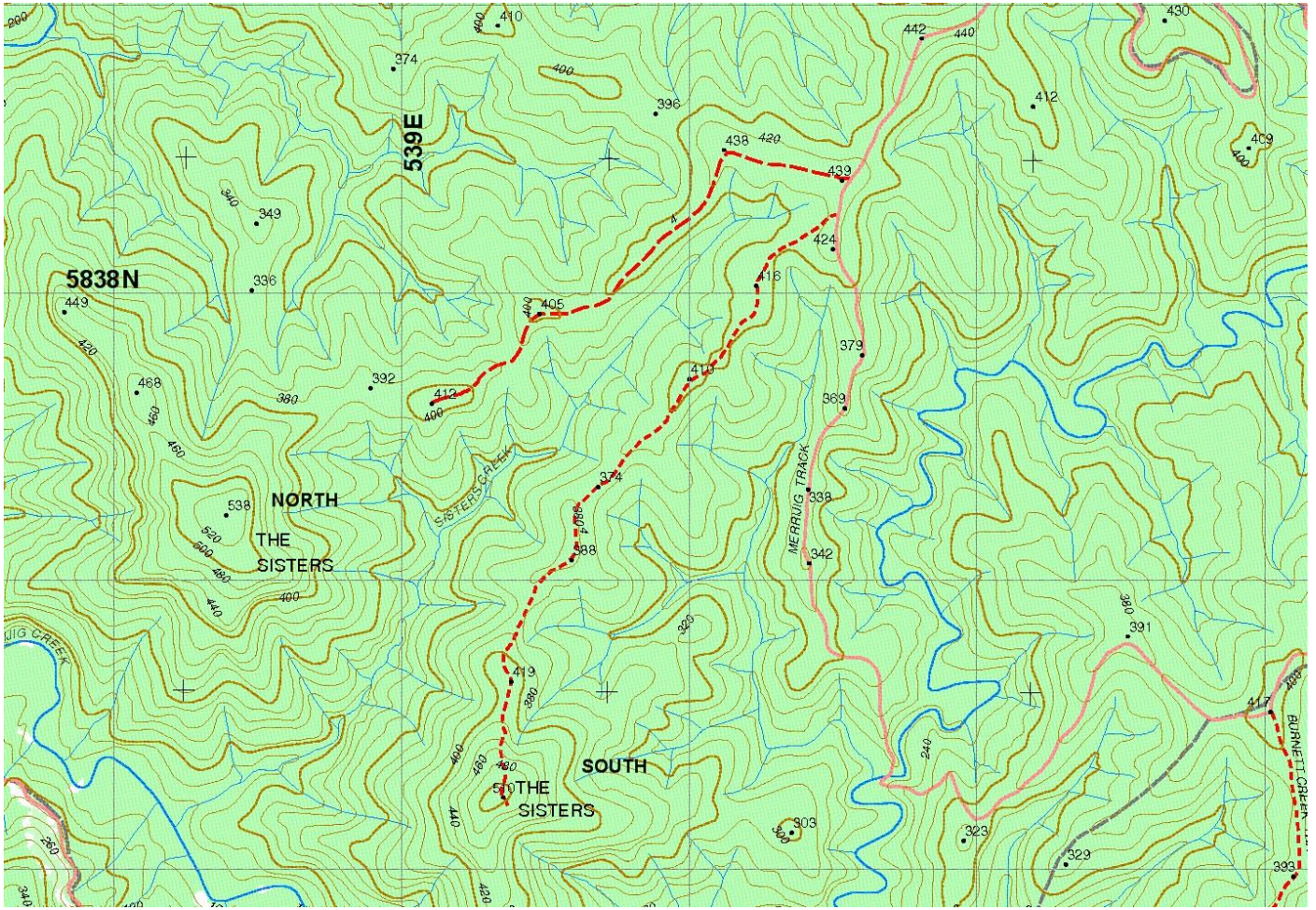


# Ben Cruachan Walking Club - Walk Preview

<b>Walk:</b>	<b>THE SISTERS - NORTH PEAK</b>			
<b>Area:</b>	<b>MOUNT ALFRED STATE PARK (N.E. of MITCHELL RIVER NAT. PARK)</b>			
<b>Date:</b>	26 MARCH 2016	<b>To be publicised in local papers?</b>		Yes
<b>Grade:</b>	S - 7 - 8	<b>Style:</b>	Day Return	
<b>Walk Length:</b>	8 Kilometres	<b>Walk Duration:</b>	5 Hours	
<b>Meeting Place:</b>	Stratford Lindenow	<b>Meeting Time:</b>	7:00 am @ Stratford 7:45 am @ Lindenow	
<b>Walk Summary:</b>	<p>This walk is in the Mount Alfred State Forest North East of Mitchell River National Park: an area rarely visited by bushwalkers. To get to the start point we will drive for approximately 90 minutes from Lindenow through quite picturesque forests with opportunities for wildlife spotting. The walk starts at the Merrijig Track and follows the route of an old forestry track through mostly open forest with a range of understorey plants. The final section of the walk is quite steep and all off track with plenty of bush bashing, rock hopping and clambering over fallen trees. A reasonable level of fitness is required and good quality footwear is a must. At the summit we will lunch under a full canopy of mature trees before retracing our steps back to Merrijig Track.</p> <p>Topographical Map: Cobbannah-Tabberabbera 8322-N 1:50,000</p> <p><b>Registration with the Walk Leader, before the day of the walk, is required for all walks</b></p>			
<b>Walk Leader:</b>	Ken Free	<b>Email:</b>	kenfree@iprimus.com.au	<b>Phone:</b> 5144 1195



AFTERNOON SUN ON THE SISTERS - NORTH PEAK



Section of Topo Map 8322-N, showing The Sisters